

# SPEC SHEET + MEASUREMENTS

PORT AUTHORITY.

## Port Authority® Lightweight Charger Jacket. J329

### Product photo



A wear-anywhere lighter weight jacket at an out-of-this-world price. Built to charge through mild wind and rain, our Lightweight Charger Jacket features a water-resistant shell and warm fleece body lining for year-round versatility.

- 100% polyester Taslan shell
- 6.8-ounce, 100% polyester fleece body lining
- 100% polyester heavyweight sleeve lining
- Wind-resistant and water-repellent
- Molded center front zipper
- Port Pocket™ for decoration access
- Elastic cuffs with tabs for adjustability
- Elastic waistband

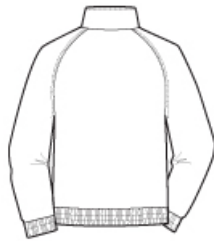
### CARE INSTRUCTIONS

Machine wash cold with like colors, only non-chlorine bleach if needed. Tumble dry low, remove promptly, cool iron if necessary. Do not dry clean.

### Sketches



front



back

# SPEC SHEET + MEASUREMENTS

PORT AUTHORITY

Port Authority® Lightweight Charger Jacket. J329

## PRODUCT MEASUREMENTS

	XS	S	M	L	XL	2XL	3XL	4XL	5XL	6XL
Chest	22 1/2	24	25 1/2	27	28 1/2	30	32	34	36	38
Body Length at Front	25 7/8	26 3/4	27 5/8	28 1/2	29 1/2	30 1/2	31	31 1/2	32	32 1/2
Sleeve From Shoulder	35 1/2	36 1/4	37	37 3/4	38 1/2	39 1/4	40	40 3/4	41 1/2	41 1/2

**Chest:** Measured across the chest one inch below armhole when laid flat.

**Body Length at Front:** Measure from high point shoulder to lowest point of hem at front.

**Sleeve From Shoulder:** Measured from high point of shoulder to finished hem at sleeve.

## SIZE CHARTS

	XS	S	M	L	XL	2XL	3XL	4XL	5XL	6XL
Chest	32-34	35-37	38-40	41-43	44-46	47-49	50-53	54-57	58-60	61-63

# SPEC SHEET + MEASUREMENTS

PORT AUTHORITY.

Port Authority® Lightweight Charger Jacket. J329

## HOW TO MEASURE

---



### CHEST

Measure under the arm and around the fullest part of the chest with arms down, keeping tape horizontal.

## COLORS

---



True Black  
PMS BLACK  
C



True Navy  
PMS 533C